

Scoring Express User Guide - Dorico

Congratulations on purchasing Scoring Express, the easiest way to create professional-looking Dorico scores! Before we get going, here's some Q & A about what you are and aren't allowed to do.



License Q & A

Can I use Scoring Express on more than one computer?

Yes! A purchase entitles one person (you) to use it on one computer at a time, on as many computers that you personally use. Unless you have extra limbs, that should suffice nicely.

Can my buddy who shares my computer use Scoring Express?

No! Well, there's no way to technically prevent it. But please ask your buddy to purchase his own copy.

My buddy wants to use my copy of Scoring Express. Can I send it to him?

No! He should purchase his own copy. Let's all be buddies!

OK. Can I change the default Scoring Express files — customize, modify styles, add instruments, etc.?

Yes! That's the beauty of it — it's totally customizable for your own use. You can change it straight away or keep the original handy and duplicate it for your own use. If you need to, you can always re-install the default Scoring Express files again.

So, once I do that, can I send those files to my buddy?

You can share Dorico files with anyone you like, and these files may inherently contain many settings derived from Scoring Express. But please encourage your buddies to purchase their own copies of Scoring Express so that they get the full benefit of the package and easy compatibility with your files — including all the fonts, house styles, and manuscript papers that come with Scoring Express.

Installation

Quit Dorico if it is running.

! Scoring Express is supported only with Dorico 4.3 and higher.

This installer will overwrite any existing Scoring Express for Dorico templates and document styles, and will install all of the necessary fonts. It will not affect any other files or settings.

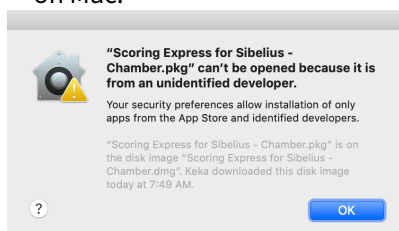
Templates are installed into a **Documents/Scores/Scoring Express Dorico** folder in your user folder. They are also installed in the **Project Templates** folders in the default installation path for Dorico support files. The remainder of the supporting files and fonts are installed in the appropriate support folders on your computer.

If you are installing Scoring Express for the first time, or if you are updating from a previous version of Scoring Express and have not customized your templates further, you can proceed with the installation.

! However, if you are updating from a previous version of Scoring Express and you have customized your Scoring Express templates in Dorico, and you wish to make a backup of them, please do so before proceeding with the installation.

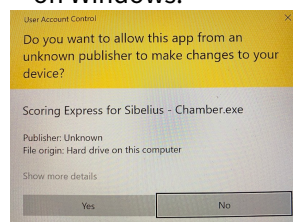
Double-click the **Scoring Express for Dorico** installer (**.pkg** on Mac or **.exe** on Windows) and follow the prompts.

! If a message like this appears
on Mac:



Please right-click (or **Control**-click) the **.pkg** to open it. Please see this Apple support article for more information: <https://apple.co/3n1uG36>

on Windows:



Please click **Yes** to proceed with installation. Please see this Microsoft support article for more information: <https://bit.ly/2Kdzt3q>

Scoring Express installs Dorico files, Dorico support files such as libraries and document styles, and fonts. It does not install any executable files or other files that control your computer, so you can be confident in proceeding with installation.

You're now ready to start using Scoring Express!

What is Scoring Express?

Scoring Express is a collection of professional templates and high-quality fonts for Dorico — all installed in one go, so you can get started right away — based on the same templates we use at NYC Music Services, an industry-leading music preparer.

But each Scoring Express package is much more than just the templates. Embedded within each template are hundreds of custom settings that can be quickly imported into any existing file as a house style, selectively or collectively, instantly beautifying your existing scores.

The settings in Scoring Express files are the result of decades of experience preparing music notation at the highest level. Embedded throughout each file are carefully considered parameters that refine positioning, placement, and design. They reflect the expert advice and tips you'll find on our Scoring Notes blog.

Drawing on our knowledge of the ins and outs of Dorico, we have made use of some of the more obscure features and settings and baked them right into the Scoring Express defaults so that you don't have to spend time fiddling with them. Each file also includes loads of additional lines, font styles and paragraph styles that extend Dorico's default capabilities in many ways.

I Can't Believe It's Friday
 Somewhat freely, without dragging
 Music by Johnnie Composer
 Lyrics by Jane Lyricist

C G Em D C Em Am

(A) C G Em B

can't be - lieve it's Fri - day, The whole week's al - most through.

D Am/C D Am/C

Mon - day seems just yes - ter - day, And Tues - day's still brand new!

C#7 F#m Bm7 C#7

I work all week, got bills to pay.

Scoring Express in "The New Real Book" style

Excited to use this? So are we!

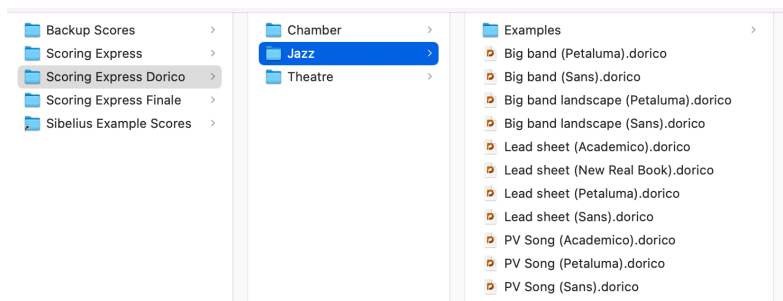
Starting with a Scoring Express template

There are two ways you can start with a Scoring Express template:

- Opening the Dorico template file directly;
- Creating a new score from a project template from within Dorico.

Open a Scoring Express template file directly

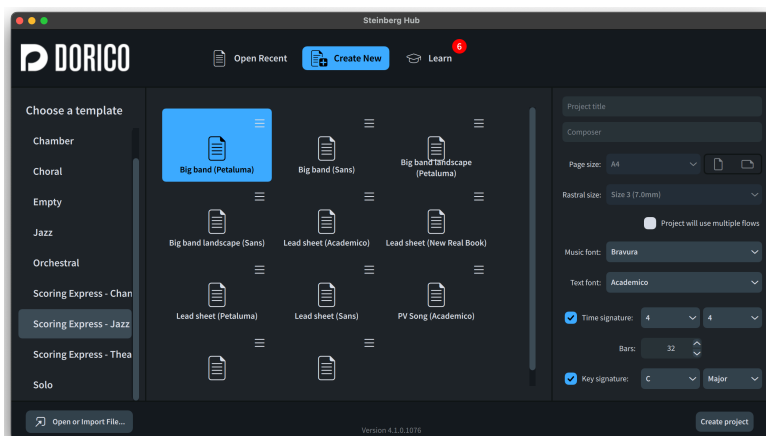
The Scoring Express installer drops a suite of stand-alone template files into your **Documents/Scores** folder, in a new **Scoring Express Dorico** folder.



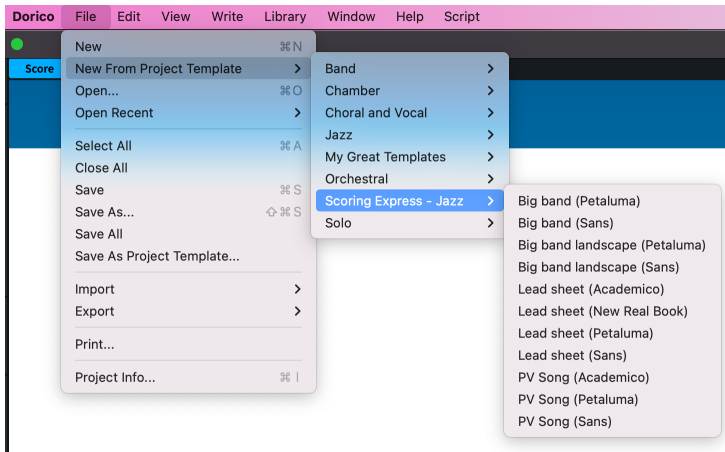
You can simply open one of these files to begin working. We advise that, before you begin, you make a copy of any file you work with, to prevent accidentally changing the default file. But if you do ever accidentally change a default file, just run the Scoring Express installer again.

Create a new score from a Scoring Express Template

The Scoring Express installer installs Templates with the same settings as those in the stand-alone template files. You'll find them anytime you start a new score in Dorico, from **Window > Hub > Create New**:



Or, from **File > New from Project Template...**:



You can build a new score from one of these files in the same way you would with any other Project Template. Select the template desired, and, if you're using the Hub, finish creating your score by completing the information in the Project Options section, where you add or change information and settings as required.

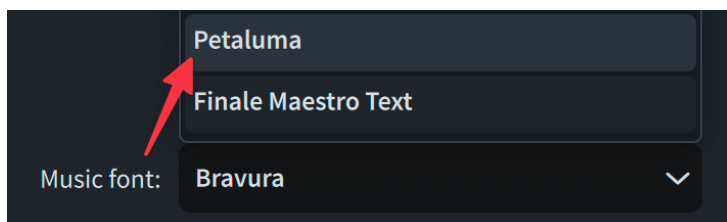
Should I begin a score directly from a file or a project template?

Each method will yield similar results, but there are a few differences, which you can consider in deciding which approach to take:

When you open a template file directly into Dorico, you have the same exact file we've created with the page size, layout options, instrumentation, and text objects already perfectly placed for you. All of the part layouts have been set up and adjusted for what we consider to be the ideal settings. However, if your desired document is different than the exact settings we've programmed, you'll need to make any necessary adjustments such as page size, staff size and margins, document setup, adding instruments, the starting key and time signatures, tempo, and pickup bar after opening the file, using Dorico's regular program tools.

When you create a new score using **New from Project Template...**, you'll have the opportunity to customize elements of your score right away, such as the title, composer, time signature, and key signature.

Note that the Page Size and Rastral Size options are grayed out for Scoring Express templates. These settings can be customized in Layout Options if necessary. The hub defaults the Music font and the Text font to Bravura and Academico, or whichever Music font and Text font have previously been used here. Scoring Express templates only rely on the Default Text font for Staff Text (**Shift-X**) and System Text (**Shift-Alt/Opt-X**), but if you select a Jazz template that has **Petaluma** or **New Real Book** in the name, you should manually select Petaluma from the list of Music fonts.



👉 If you make certain adjustments to a Scoring Express Template, consider saving it for your own future use.

If you plan on importing an existing MusicXML file into a Scoring Express file (see below), it's probably best to start by just opening a template file directly into Dorico.

If you plan on composing straight into a Scoring Express file, creating a score using the **New Document from Project Template...** method might be better.

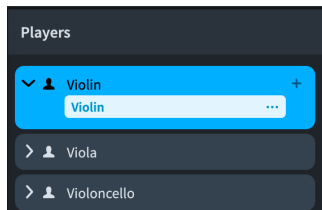
Changing instruments in a Scoring Express file

Scoring Express files already have parts (“part layouts”) fully set up and ready to go, with all the settings we like. For that reason, if you need to change the instrumentation of your score, and especially if you already have music in it, we recommend changing the instrument instead of adding a new player, so that the part is retained.

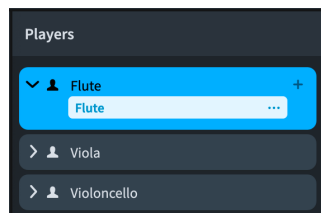
For instance, if you open up the **Trio** template file in the Scoring Express – Chamber package, you’ll see it’s scored for violin, viola, and cello.

As an example, if you wish to change the violin to flute, we recommend you do this:

- In Setup mode, in the **Players** panel, expand the card of the player whose instrument you want to change (Violin, in this example). The card lists the instruments held by the player.



- In the instrument label, click the instrument menu (three dots) and choose **Change Instrument** to open the instrument picker.
- Select the instrument you want in the instrument picker (Flute, in this example).



- Press Return to change to the selected instrument.

The selected instrument is changed without affecting any music on its staff.

Where appropriate, different clefs are used by default. This means that notes can appear differently so that they are notated correctly according to the new clef.

After you change the instrument, you can change the player order, for example, if the new instrument requires a different position according to orchestral convention.

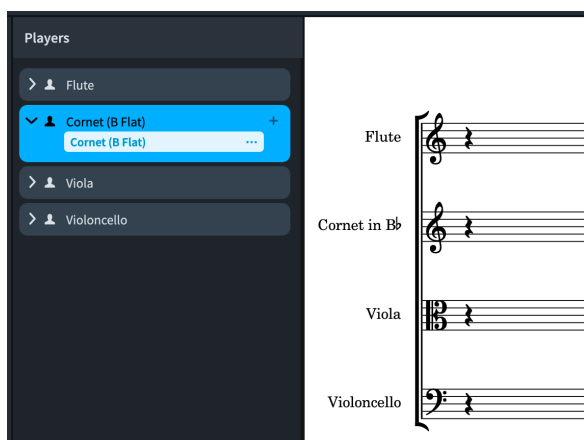
Adding instruments to a Scoring Express file

Not to worry, though — if you want to add new instruments, you can do that too, and get the benefit of the Scoring Express setup.

To do that, follow these instructions, as taken from the Dorico product manual:

- In Setup mode, add an empty-handed player and open the instrument picker in any of the following ways:
 - To add a single player, press **Shift-P**.
 - To add a section player, press **Shift-Alt/Opt-P**.
 - In the **Players** panel, click **Add Single Player**.
 - In the **Players** panel, click **Add Section Player**.
 - In an empty project, click **Add Single Player** in the project start area.
 - In an empty project, click **Add Section Player** in the project start area.
- Select the instrument you want in the instrument picker.
- Press **Return** to add the selected instrument.

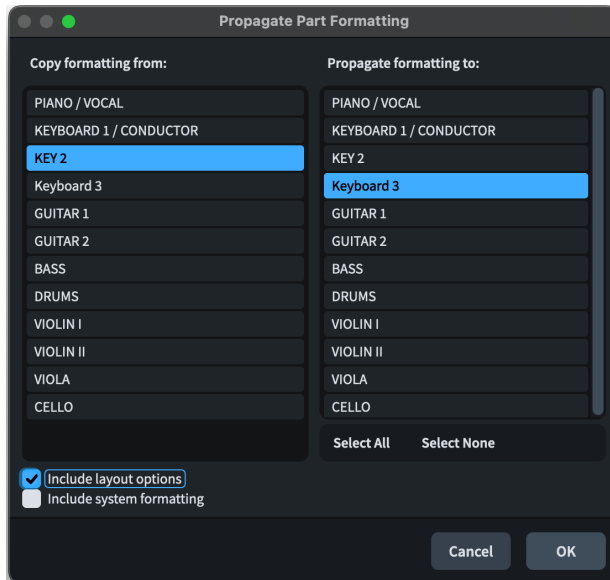
The single/section player is added and is automatically named after the selected instrument. The player's order in the **Players** panel depends on your current player sorting setting, which you can change.



The player is assigned to its own new part layout, all full score layouts, and all flows that originated in the project.

In order for new part layouts to take on the template's Layout Options, you need to **Propagate Part Formatting** from a similar part layout to the new one. For instance, having created a Keyboard 3 player in this project, right-click anywhere in the Layouts list in Setup mode and click **Propagate Part Formatting...**

Choose a similar instrument to **Copy formatting from**, select the new part layout to **Propagate formatting to**, check **Include layout options**, uncheck **Include system formatting** and hit OK.



Scoring Express templates use three sets of Layout Options for parts:

- One for keyboard instruments;
- Another for doubling players (predominantly Reeds in the Theatre & Studio package);
- And another for everything else.
- (The Theatre & Studio package adds a fourth layout for piano-conductor parts; see the separate documentation for more information.)

You'll get the right settings if you propagate from Bass to Drums, or from Viola to Trumpet, or from Keyboard 2 to Harpsichord.

Scoring Express templates use NotePerformer by default. If you don't have NotePerformer, or you wish to change to a different playback template, go to **Play > Playback Template**; select your desired template (such as **HSSE+HSO (Pro)**); and click **Apply and Close**.

Dorico Pro automatically loads sounds for the instrument according to the current playback template.

Importing a MIDI, MusicXML, or Dorico file into a Scoring Express file

Scoring Express templates are designed to take maximum advantage of the power of Dorico which allows for importing MIDI, MusicXML, and Dorico files directly into a template and have the file inherit the template’s settings.

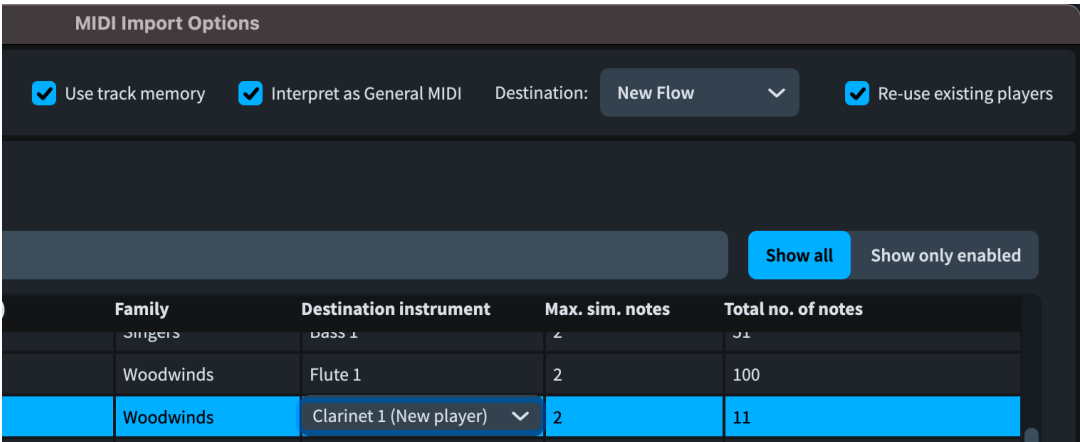
To import a file into your Scoring Express template, first, open the empty Scoring Express template directly in Dorico. This should be the template that you want to import your source file into. You may wish to save this as a new file now, so as not to overwrite the template file.

Then go to the **File** menu and select **Import**, and choose **Flows...** to import a Dorico file; **MIDI** to import a MIDI file, or **MusicXML** to import a MusicXML file and browse for your source file.

The instrumentation of your source file need not match that of your template.

Importing MIDI files into a Scoring Express file

For MIDI files, in the **MIDI Import Options** dialog that appears, you can decide whether or not you wish to **Re-use existing players**. If an instrument that is present in the MIDI file is not in your template, you can add it to your score.

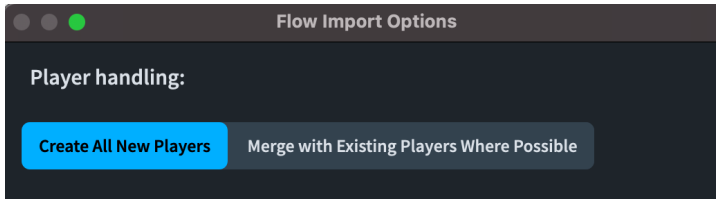


Further, you can choose the import **Destination** of the source file, in a **New Flow** or the one that’s already in your document.

Importing Dorico files or MusicXML files into a Scoring Express file

The process of importing native Dorico files or MusicXML files into a Scoring Express template is similar.

After you choose your source file in **File > Import > Flows...** or **File > Import MusicXML...**, in the **Flow Import Options** dialog that appears, choose either **Create All New Players** or **Merge with Existing Players Where Possible**, depending upon how you intend to use this feature.



For example, if you have a wind quintet in that you wish to import in the Scoring Express Chamber - Quintet template, you could first change the players from the string defaults to brass (as described in the earlier section), and then import your MusicXML file using the **Merge with Existing Players Where Possible** option.

On the other hand, if you have a piano sketch that you plan to orchestrate for the quintet, you may wish instead to import that piano sketch in using the **Create All New Players** option.

Time signatures, key signatures, and many other elements are all imported directly into your Dorico file.

You will probably want to delete the empty Flow 1 that will persist after importing a music file.

Consult the Dorico documentation for more information about how to use these features in detail!

Setting MusicXML preferences

Go to **Preferences > MusicXML Import**. Do this first, before importing your MusicXML file.

The preferences you choose will depend upon how closely you wish to adhere to the notation of the source file you're importing into Dorico, versus how much you want to allow the settings of a Scoring Express template to define the appearance of the score. You may wish to experiment to find the optimal preferences for your source file(s).

Tokens

Tokens (known as “wildcards” in Sibelius) allow you to share the same text information on multiple pages (such as a title or part name). You can only use tokens in text frames. You cannot use tokens in text items.

Scoring Express makes extensive use of these, and you can set these both for the entire project, and for each flow, individually.

Go to **File > Project Info** to change this information, and see the included example file(s) that come with Scoring Express as a demonstration of how these are used:

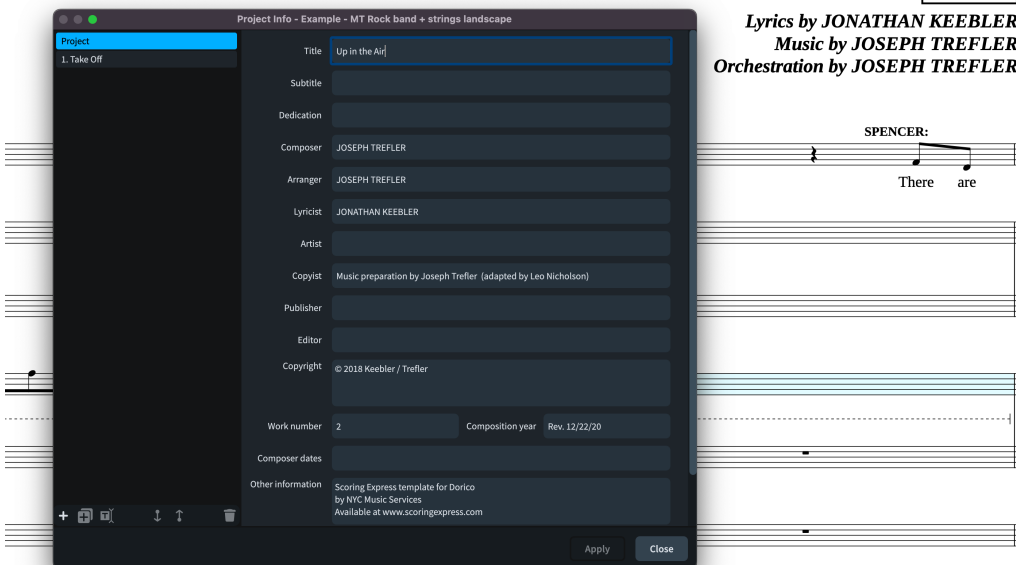
Take Off

[Rev. 12/22/20]

Up in the Air

2

Lyrics by JONATHAN KEEBLER
Music by JOSEPH TREFLER
Orchestration by JOSEPH TREFLER



In single-flow projects you can edit the project fields or the flow fields and their content will show on the page correctly. In projects with multiple flows you need to use the flow fields.

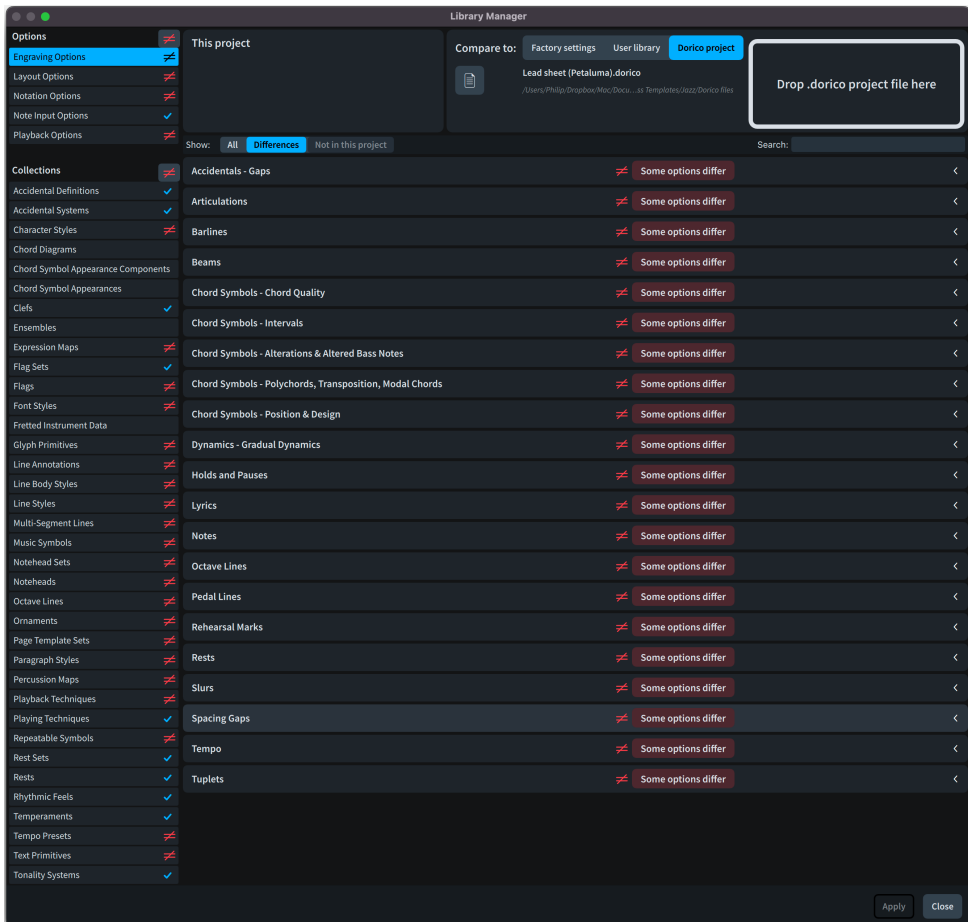
See the Dorico documentation for further details.

Importing Scoring Express libraries into an existing Dorico file

If you already have a Dorico file and wish to import a Scoring Express house style, or “library” into it, this is a great way to beautify your score without needing to create a new file or import into a template. This feature was newly introduced in Dorico 4.

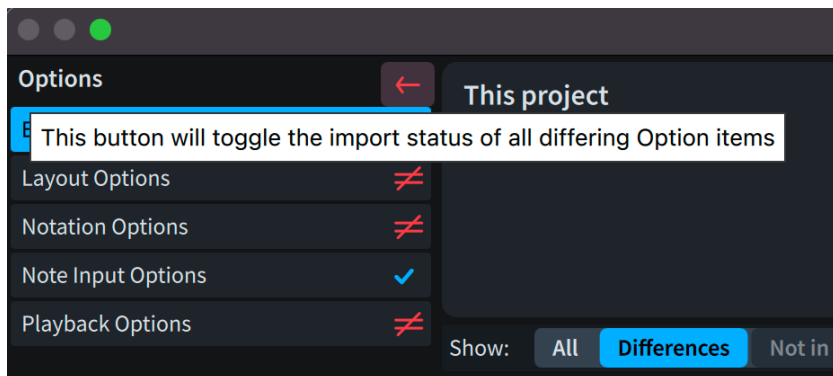
In your existing Dorico project, simply go to **Library > Library Manager**, and, into the big “Drop .dorico project file here” area, drag and drop the Scoring Express template with the style settings you’d like to import into your score.

Select **Show: All** to see all of the library settings or **Differences** to just see the ones that differ from your existing score. There may well be quite a few of them!

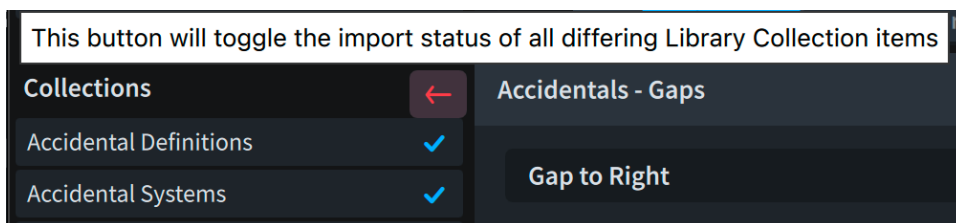


From here, you can decide to import all, some, or none of the options, from a “macro” to a “micro” – level.

If you want your score to get the full Scoring Express treatment, then, at the very top-left, go to the \neq to the right of **Options**, which, when you hover over it, will turn into \leftarrow . Clicking on this button will bring over all of the settings from the Scoring Express template you've selected into your existing project.



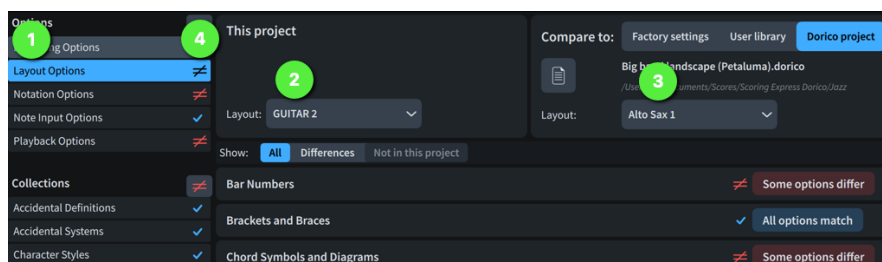
Then, repeat this step for the **Collections**:



When you do this, you'll see everything that was previously \neq turn into \leftarrow .

Importing Layout Options requires a few extra steps, as the \neq will only transfer the Layout Options of the Score layout by default.

1. Select Layout Options in the left column;
2. Select the first part layout in the **This project** column;
3. Compare to a similar layout in the template;
4. Click the \neq .

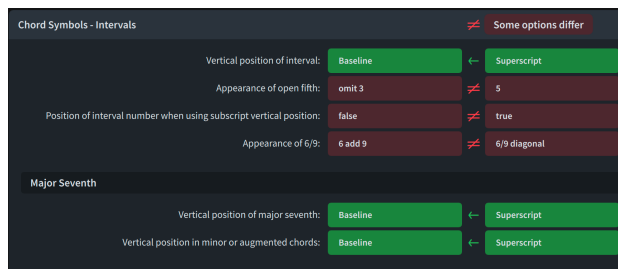


Repeat for each of the other layouts, noting that Scoring Express uses different Layout Options for grand staff instruments, doubling players, and everything else.

Alternatively, import Layout Options for one regular part layout, one keyboard instrument (if applicable) and/or one doubling player (if applicable), then see instructions for how to **Propagate Part Formatting** earlier in this documentation.

Be sure to click **Apply** for the changes to take effect.

If you prefer, you can selectively import each option or collection, or, indeed, even a subset of those at a granular level to only import, for example, just certain Scoring Express preferences for chord symbols, without disrupting other elements of your project.



Exporting libraries

New in Dorico 4.1, you can export a library from a Dorico project, like a Scoring Express template, as a **.doricolib** file, and import this library file into another Dorico project in the same way you would import the library settings contained in a Dorico project.

Because there is no difference in either the ease of, or the results from importing a **.doricolib** or a **.dorico** file into a Dorico project, we have opted to not create separate **.doricolib** files from the Scoring Express Dorico templates, although you can certainly do this yourself, if you like, in **Library > Export Library...**, if you are creating a repository of libraries for your own use, separate from the templates.

Consult the Dorico documentation for more information about working with libraries.

Tidying up

We're certain Scoring Express will save you loads of time in making your scores look great. Still, you'll likely need to do some tidying up after importing a score into a Scoring Express template, or after importing a Scoring Express library into an existing Dorico score.

In general, we recommend:

- Resetting fonts and positioning of expressions, lines, articulations and other items to their default positions and designs
- Clearing manual positioning of items
- Resetting staff spacing and note spacing

You'll get best results by doing this for your entire score, but you can certainly take a more selective approach and perform these operations on a piecemeal basis. Consult the Dorico documentation for how to perform these tasks.

Special font features

Scoring Express for Dorico installs all of the following font suites automatically:

- Arimo
- Archivo
- Bar Numbers Narrow
- Figurato
- Gothic A1
- P052
- Pori Rehearsal
- Tinos
- Special fonts for use with chord symbols
 - AcademiChords
 - GothiChords
 - PetaChords
 - PetaText

Text fonts

Scoring Express uses Academico, Petaluma Script, Arimo, and Tinos as its main text fonts.

Academico is an engraved-style serif font that is similar to Century Schoolbook. Petaluma Script is a handwritten-style font. These are not included with Scoring Express for Dorico, because they are already bundled with Dorico.

Arimo and Tinos are serif and sans-serif fonts, respectively, that are metrically compatible with Arial and Times New Roman, respectively, but subtly different in appearance.

Archivo is a sans-serif font that is similar to Arimo, and also comes with a Narrow family.

These fonts, and all of the fonts that come with Scoring Express, are free to legally distribute to anyone.

Earlier versions of Scoring Express used Gothic A1 (a sans-serif font) and P052 (a Palatino equivalent) as default fonts in some documents. These fonts are still installed with Scoring Express to ensure compatibility with older projects, and you may use them if you like. (Gothic A1 is still used in certain specific areas like chord symbols.) However, we found that Arimo and Tinos provided better cross-platform compatibility with certain software, and their metric equivalence to the common commercial fonts make it easy to switch from one to the other, if desired.

Bravura and Petaluma

Scoring Express uses Bravura as its main engraved-style music font, and Petaluma as its main handwritten-style font. These fonts were designed by Steinberg for use in Dorico, but are freely usable in any software that adheres to the SMuFL standard. These are not included with Scoring Express for Dorico, because they are already bundled with Dorico.

Bar Numbers Narrow

Bar Numbers Narrow is a modified version of Gothic A1 that is more suited to instances where horizontal space is at a premium, such as when displaying bar numbers on every bar. It is not used in the current release of Scoring Express for Dorico, but it may be in the future.

Figurato

The Figurato and FiguratoB fonts use unique entry methods to achieve a variety of results in figured bass notation. This is a different system than that which is used by Dorico and the two are not compatible.

The Scoring Express for Dorico templates do not use Figurato, but instead use Dorico's built-in Fingering feature. However, we have included it with Scoring Express, in the event you wish to use it in other areas.

Read the documentation to understand how to enter figured bass using Figurato:

<https://github.com/fkretlow/figurato/blob/master/docs/manual.md>

Pori Rehearsal fonts

Included in several Scoring Express templates are house styles that use the Pori Rehearsal fonts. **Pori Rehearsal Enclosed**, **Pori Rehearsal Overline**, and **Pori Rehearsal Underline** are text fonts derived from Petaluma Script with built-in enclosures and semi-enclosures. The Pori Rehearsal fonts use the following special characters:

[and] (square brackets) as the left and right enclosures

| (pipe) for a flat

i.e., typing [to Clarinet in B|] results in **(to Clarinet in Bb)**

Chord symbols

Scoring Express for Dorico uses modified versions of text fonts to improve the appearance of chord symbols. These fonts are AcademiChords, GothiChords, PetaChords, and PetaText. You do not need to input chord symbols any differently than usual in Dorico to make use of these fonts.

Playback

The Scoring Express templates are optimized for notation. No adjustments have been made to playback settings; however, we recommend NotePerformer, sold separately by Wallander Instruments. More information at:

<https://noteperformer.com/>

Troubleshooting

Please let us know of any trouble using Scoring Express, and steps taken to resolve any issues. Please first consult the Dorico documentation to see if the answer to your question can be found there:

<https://steinberg.help/dorico-manuals/dorico-pro/dorico-pro-4/>

Compatibility

Scoring Express is built for the latest version of Dorico, which is 4.1 at the time of this writing. Use with earlier Dorico versions is not recommended nor supported.

Scoring Express templates and page templates are designed for North American page sizes, but they should look just fine switching to the nearest ISO equivalent (i.e., A4). This is done in **Library > Layout Options... > Page Setup**.

Depending on your tastes, in certain circumstances you may prefer adjusting the staff size by a fraction of a millimeter or two in either direction as well.

Credits

Leo Nicholson created the Scoring Express for Dorico templates, developed their house styles, and documented their features, with advice from Joseph Treffer.

Bernie Cossentino of Twin Page Productions (<https://www.twinpagemusic.com/>) adapted AcademiChords, GothiChords, PetaChords, PetaText, and Bar Numbers Narrow and greatly contributed to the overall development of this project.

Petaluma was designed by Anthony Hughes of Steinberg Media Technologies. Petaluma Script, Bravura and Academico were designed by Daniel Spreadbury of Steinberg Media Technologies.

Arimo and Tinos were designed by Steve Matteson of Matteson Typography.

Archivo and Archivo Narrow were designed by Gatti & Omnibus-Type Team.

Jeff Kellem of Slanted Hall Type Foundry (<https://slantedhall.com/>) created the Pori Rehearsal fonts, derived from Petaluma Script.

Gothic A1 was designed by HanYang I&C Co.

Figurato was designed by Florian Kretlow.

P052 was designed by URW Type Foundry.

Font licenses

The fonts included with Scoring Express are made available under the SIL Open Font License (<https://scripts.sil.org/ofl>), which means that the fonts are free to download, use, embed, redistribute with other software (including commercial software) or to create derivative versions. The only restrictions on its use are that they cannot be sold on their own, any derivative versions cannot use the reserved font names “Norfolk”, “Bravura”, “Academico”, “Archivo”, “Figurato”, “Gothic A1”, “P052”, “Pori”, or “Petaluma” and any derivative versions must likewise also be licensed under the SIL Open Font License.

For more information about the SIL Open Font License, read the answers to these Frequently Asked Questions: https://scripts.sil.org/OFL-FAQ_web

Other font families that may be bundled with Scoring Express are made available under similar SIL Open Font Licenses, except as noted below:

Arimo and Tinos are released under the Apache License, Version 2.0. You can use them in your projects - print or digital, commercial or otherwise.
(<http://www.apache.org/licenses/LICENSE-2.0>)

Video

See this video for a guide to installation and some helpful tips on using Scoring Express:

<https://youtu.be/5kd7yi1DjP8>

It is not intended as a complete replacement for this documentation, but rather as a helpful supplement.

More information and updates

<http://scoringexpress.com>

Example files

The example files provided with Scoring Express are distributed for the sole purpose of demonstrating the Scoring Express product. They remain the property of their respective copyright holder(s) and are included with permission. No right of performance is conveyed or implied, and they may not be copied or distributed further in any way without permission.

“Christmas in New York”

Lyrics by Bill Nelson

Music by Joseph Trefler

Copyright © 2020 Nelson / Trefler

Used by permission

<https://billnelsonbillnelson.com/>

<http://josephtrefler-composer.com/>

