

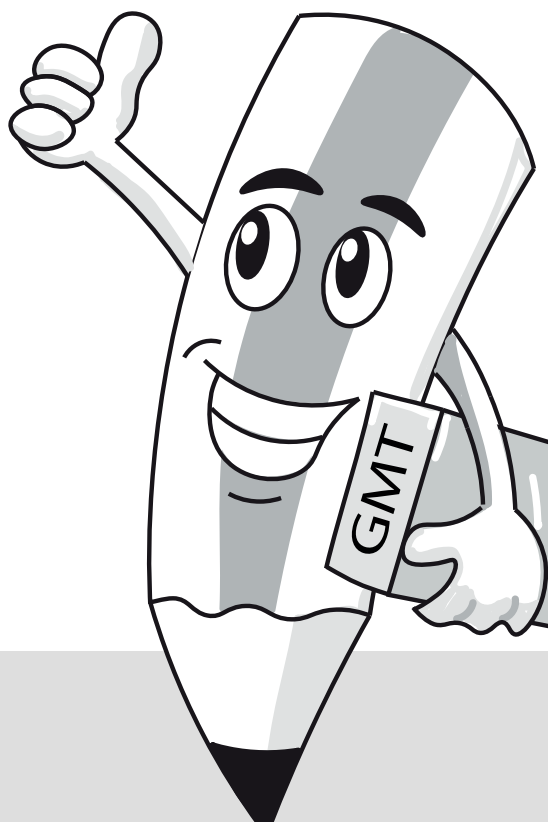
Graphical MIDI TOOLS

Plug-in for Sibelius®

2

How To Install

Guide



How To Install

Congratulations on acquiring **GRAPHICAL MIDI TOOLS 2** (GMT) – plugin for Sibelius! Follow these easy steps to get GMT up and running.

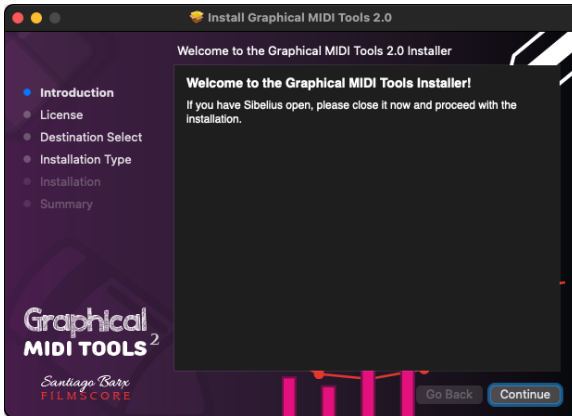
Before installing GMT, please close Sibelius.

Step 1: Run the installer

a. Run the **Graphical MIDI Tools Installer** application found in the downloaded .DMG (Mac) or .ZIP (PC) file.

- **On Mac:** double click on the **Graphical MIDI Tools 2.x.pkg** to run the package installer.
- **On Windows/PC:** double click on **Graphical MIDI Tools 2.x installer.exe** to run the setup wizard.

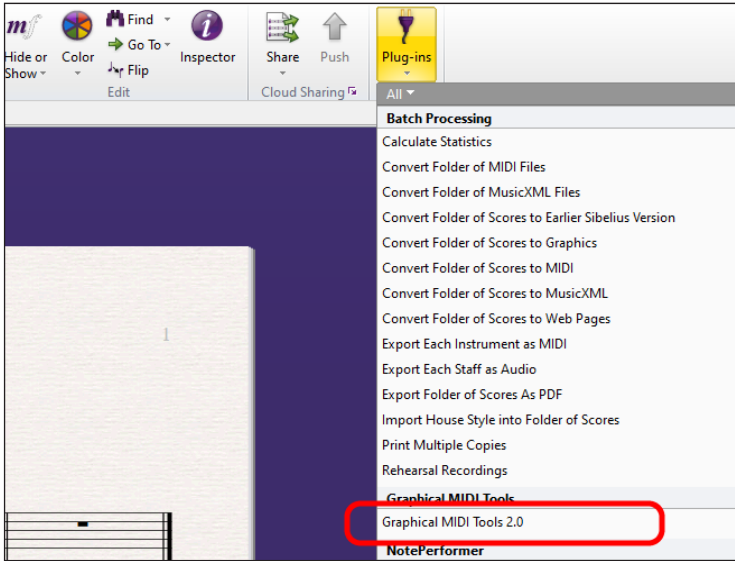
Complete the package installer (Mac) or setup wizard (PC):



The GMT package installer (Mac)

b. Once the installer process is completed, open Sibelius.

You should see the “Graphical MIDI Tools 2” option added to the “Plug-ins” menu (in the “Home” tab).



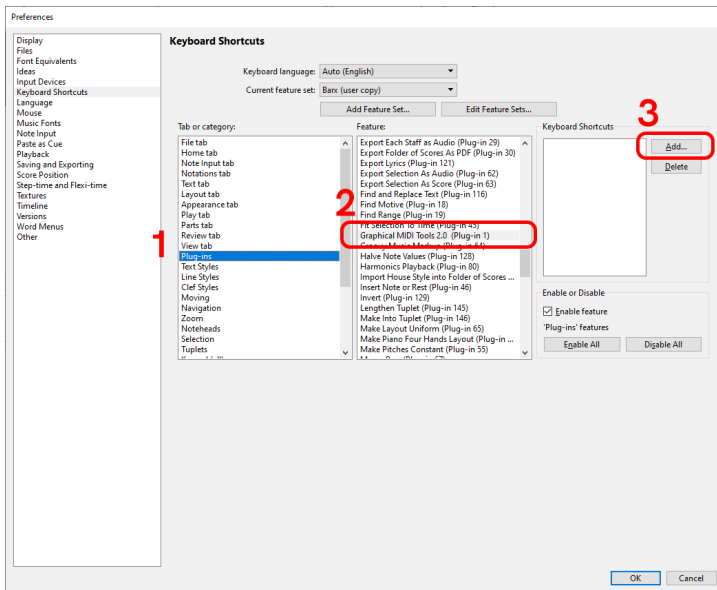
The Graphical MIDI Tools 2 Option in the Plug-ins menu

Step 2: Assign a keyboard shortcut

The next step is to assign a **keyboard shortcut** to the plugin. In order for GMT to work, it must be used through a keyboard shortcut (not from the menu).

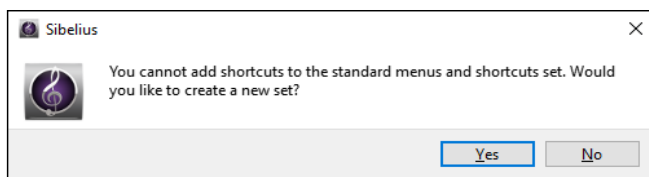
To do this:

a. In Sibelius, go to **File > Preferences**. On the left column select “**Keyboard Shortcuts**”. You should see the following dialog:



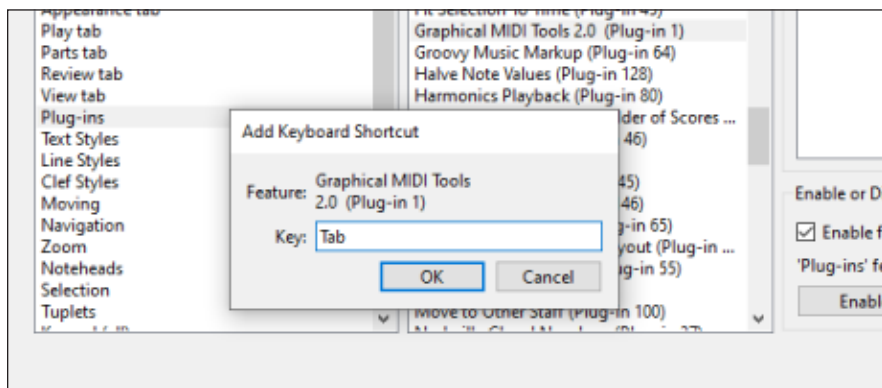
- (1) In “Tab or Category” choose “Plug-ins”.
- (2) In "Features" search for the option “Graphical MIDI Tools 2”.
- (3) Click on the “Add...” button.

Notice: If this is the first keyboard shortcut you add, Sibelius will ask you to create a new “shortcuts set”, since the “Standard” set cannot be overridden. Click “Yes” and indicate a name for the shortcut set (for example “My shortcuts”)



b. Choose a shortcut key.

IMPORTANT: The shortcut key must be a single key and **not a combination**. Using modifiers (SHIFT, CONTROL or ALT) is not allowed, because these are reserved for GMT functionality.

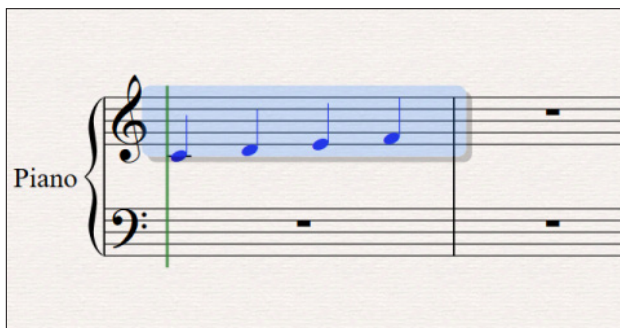


In this example, we use the “Tab” key but you can choose the one that fits you best.

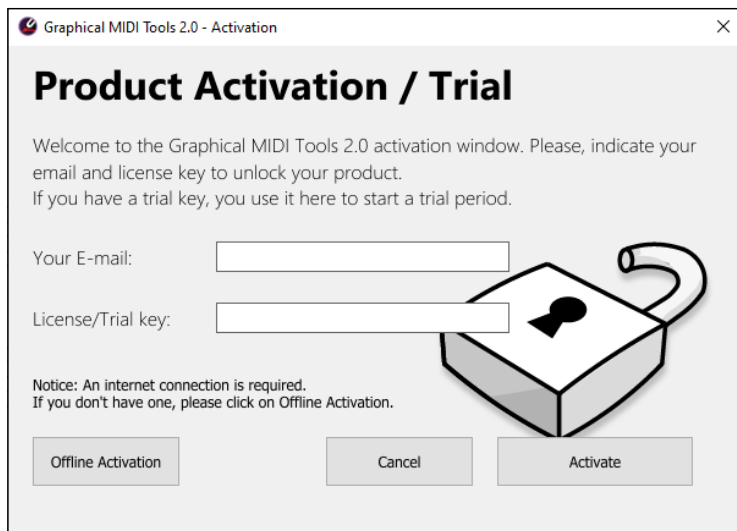
First Run and Activation

Once you have assigned a keyboard shortcut, you are ready to run GMT. This plugin works on a bar basis, to launch it:

- a. Select one or more measures from a staff of the score

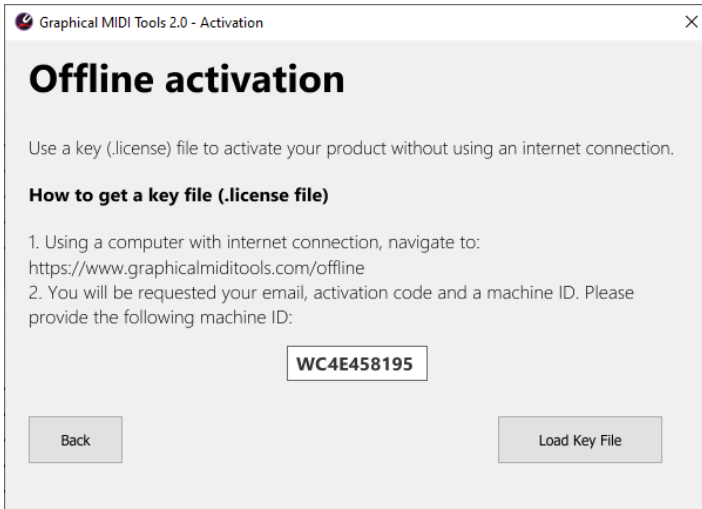


- b. Press the plugin shortcut key (e.g. "Tab"). Since this is the first run, the **activation window** will appear, requesting your email and License Key (or free trial key).



Offline Activation (optional)

Alternatively, you can use the offline activation option if your computer is not connected to the internet. Click on the “Offline Activation” button. A key file (which contains your license information) will be required.



To obtain a key file follow these steps:

1. Using a computer with an internet connection visit:

www.graphicalmiditools.com/offline

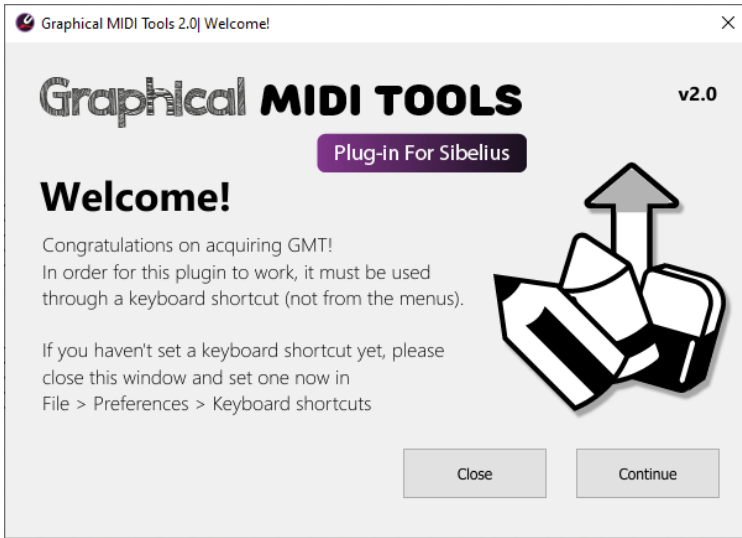
2. Fill in your email and license/trial key.

3. Your machine ID will be requested too. This code is provided to you in the Offline Activation window.

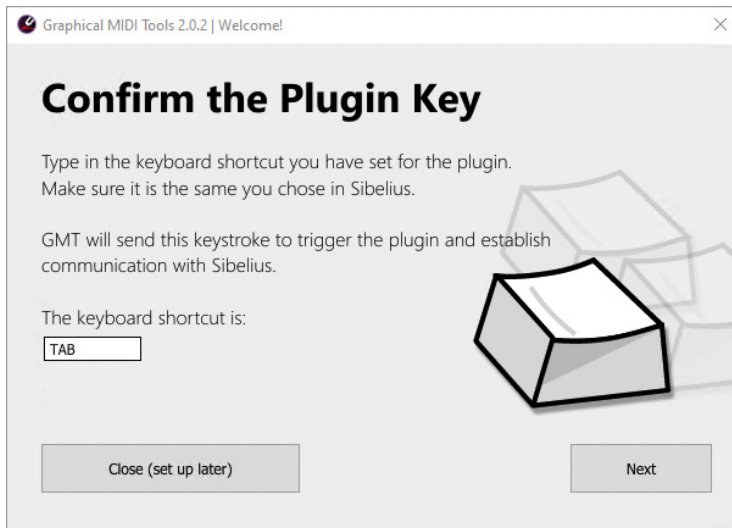
4. Download the file and save it in a portable storage (e.g USB drive) device.

5. Load the file with the “Load Key File” button.

On success, the GMT welcome window will appear. Press “Continue”.

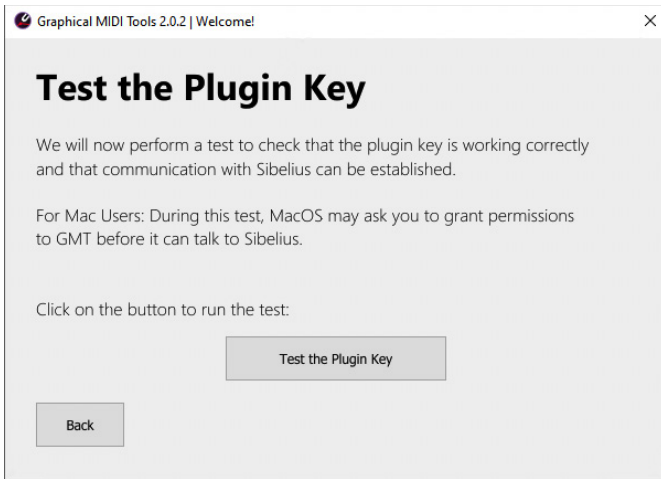


Next, GMT will ask you which shortcut key you are using for the plugin. Make sure you indicate the same shortcut key you created in Sibelius.



Press “Next”. GMT will ask you to perform a test to check that the plugin key is correctly set and communication with Sibelius can be established.

Press “Test the Plugin key” to start the test.

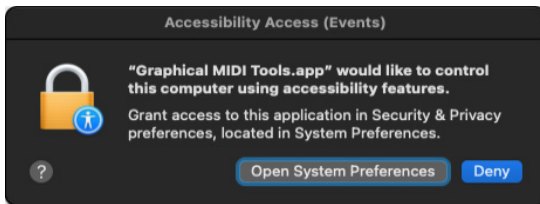


Understanding how GMT works

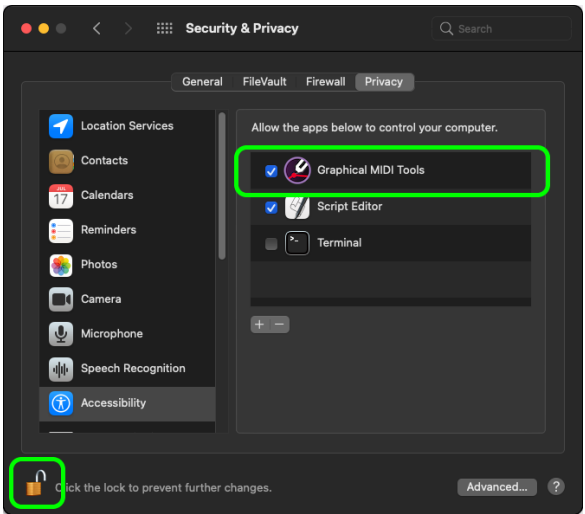
GMT simulates a key stroke and sends it to Sibelius every time it needs to connect with it (to send and receive information). By triggering the "Manuscript plugin" both applications can communicate between each other.

For Mac users: Granting permissions

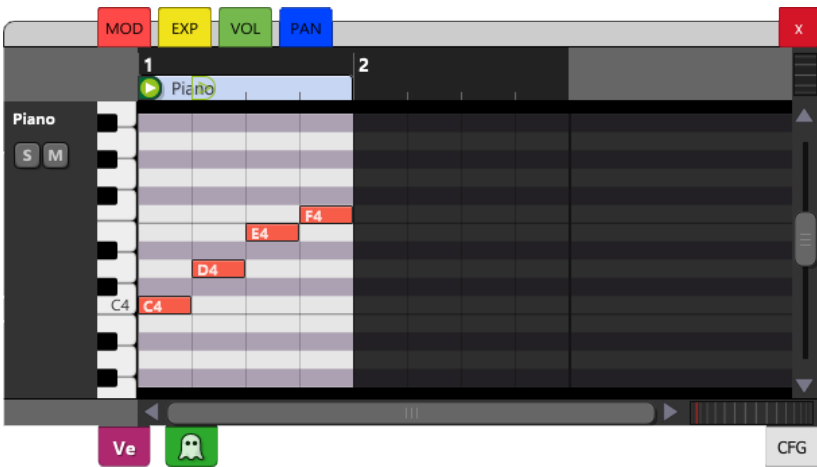
If you are on MacOS version 10.15 (Catalina) or higher, a System Preferences dialog will appear asking you to grant permissions to the application. This is needed by GMT for the sole purpose of sending the key event.



In the system preferences, click on the lock (at the bottom left), then check the "Graphical MIDI Tools" item on the list.



After testing the key, press "Done" and you are all set. The GMT Piano Roll window should appear.



What's next?

Now you can start working with GMT and create great MIDI mockups inside Sibelius!

To get the latest news and documentation, we recommend you visit our official website:

WWW.GRAPHICALMIDITOLS.COM

We also recommend having a look at the User's Manual, included in the downloaded .DMG / .ZIP file.

Issues while installing? Contact us!

If you encounter any issues while setting the plugin key or installing GMT, please don't hesitate to contact our support team at:

support@graphicalmiditools.com

(This page intentionally left blank)

Santiago Barx
FILMSCORE



Graphical
MIDI TOOLS
Plug-in for Sibelius®

Visit:

WWW.GRAPHICALMIDITOOLS.COM

Santiago Barx
FILMSCORE

WWW.SANTIAGOBARX.COM

COPYRIGHT © BY SANTIAGO BARX FILMSCORE. WINDOWS® IS A TRADEMARK OF MICROSOFT CORPORATION.
MAC®, APPLE® AND macOS® ARE TRADEMARKS OF APPLE COMPUTER INC. SIBELIUS® IS A TRADEMARK
OF AVID TECHNOLOGY, INC